



INNOVATIONS 19.3

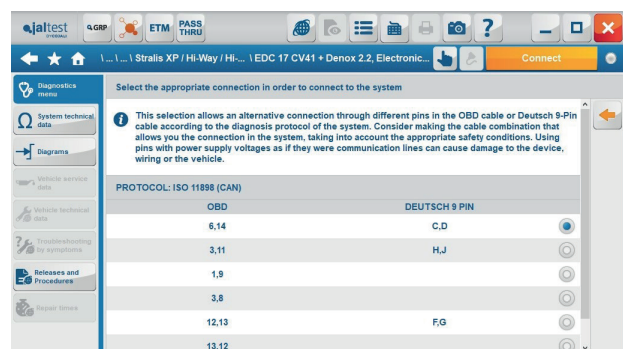


SOFTWARE INNOVATIONS

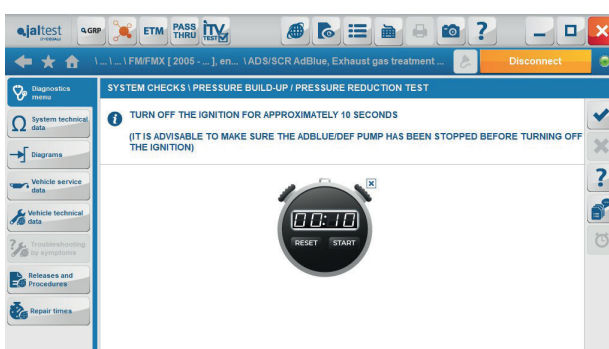
Manual selection of connection pins

This *Expert mode* function allows the user to configure the connection to a system by manually selecting the communication pins on the OBD or Deutsch 9-pin cable. In this way, this function offers the user an alternative to the connection offered by the software in the most common communication protocols.

Only available for V8 and higher devices.

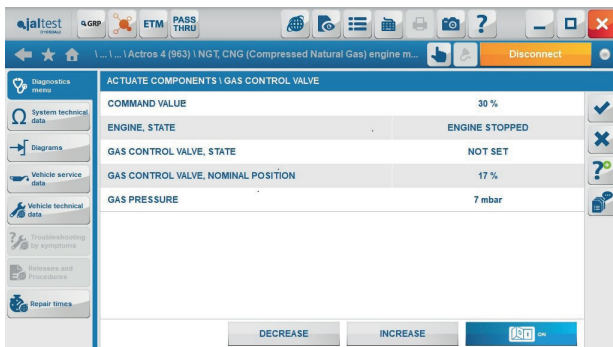


Countdown timer

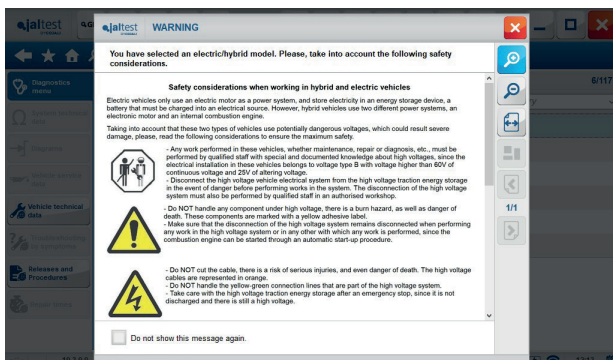


During the execution of some functionalities, it is necessary to wait a certain period of time until performing any operation. From this version, in this type of steps, Jaltest offers a countdown timer with the set time.

Improvement in the interaction with buttons in action steps



Safety considerations in hybrid and electric vehicles (HEV)



These instructions appear when selecting a hybrid model, a high voltage element control system and when selecting high voltage components in the wiring diagram configurations. These are very important safety considerations when working in hybrid and electric vehicles.

NEW DIAGNOSIS AND SYSTEM FUNCTIONALITIES

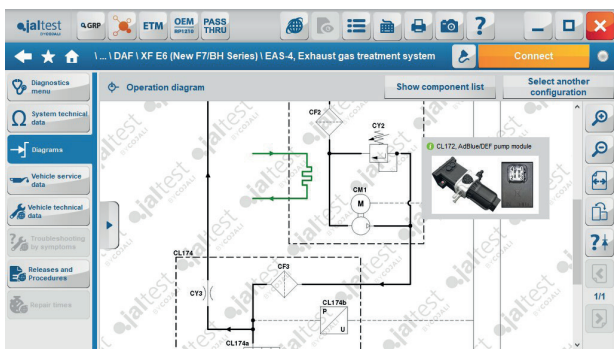
Take into account that this document is only a summary of the most important information of this new version. For more information, please visit Jaltest Report.

TRUCK AND BUS

DAF

For Euro 6 models, in [PCI UDS](#) engine management system, there are new functions such as the performance assessment of the turbo actuator.

In the [EAS4 Ecofit UL2](#) exhaust gas treatment system, the diesel particulate filter regeneration and AdBlue/DEF dosing are highlighted.



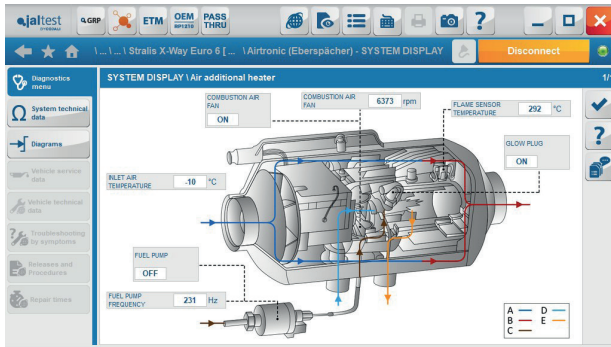
Operation diagrams in the [ECS-DC6](#), [EAS3](#) and [EAS4](#) exhaust gas treatment systems from the brand.

IVECO

For Euro 6 models, in the [EDC 17 CV41](#) engine management system, the component replacement for new system variants is highlighted.

Extension of the CNG [Metafuel 4](#) engine management system, development of functions such as the throttle actuator calibration and self-regulation parameter reset.

- + New [E-Horizon](#) Integrated Predictive Powertrain system.



System Display of Eberspächer auxiliary heater system.

MAN

- + New [A37 \(NL243/283\)](#) hybrid bus model with coverage to propulsion and energy management systems (inverters, accumulators, current converters, etc.).

Check development in the new [Tipmatic TraXon](#) transmission, as well as in [Tipmatic GTR-SGC Scania 12+2](#) transmission. The latter also has gearbox calibrations with a technical release to manually check the clutch wearing.

Technical release about the rinse of the AdBlue/DEF power supply module in the [NoNox](#) exhaust gases treatment system.

- + New [Voith Vera](#) retarder system in several models from the brand.

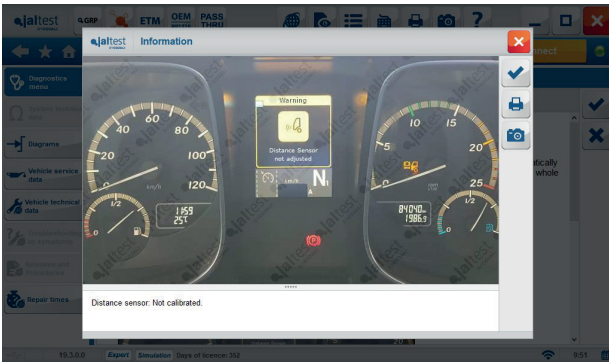
MERCEDES-BENZ

Coverage of systems with MB4 technology in the [Tourismo Euro 6](#) bus model, which also includes the interactive technical release of the vehicle electronic architecture.

System Display in the CNG [NGT 21T](#) natural gas engine management system.

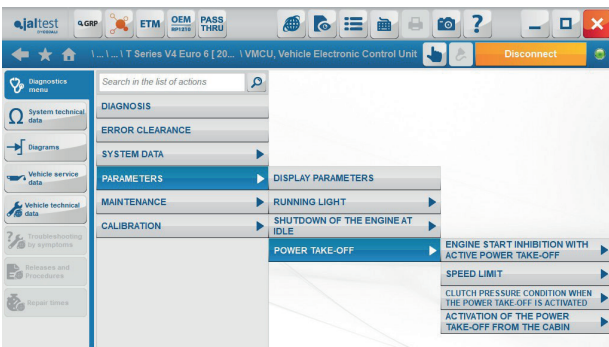
MERCEDES-BENZ

- + New **CGW 04T** variant of Gateway system of Euro 6 vehicles.
- + New **ADAS RDF 02T** distance sensor system that includes calibration.



- + New **Bluetec SCR-LO** exhaust gas treatment system (*South American market*).

RENAULT



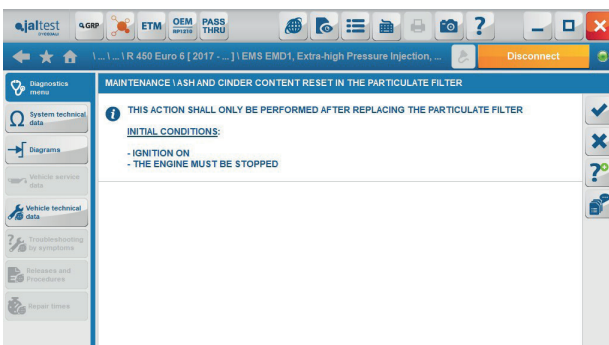
In vehicles with V4 technology, the modification of shutdown of the engine at idle parameters and power take-off control parameters in the **VMCU** vehicle electronic control unit is highlighted.

Wiring diagram and System Display in the **CCM V4** climate control system have been included.

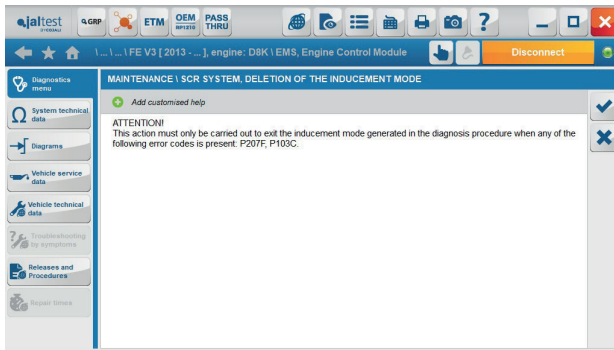
SCANIA

Coverage extension in **EMD1** engine management system of the new Scania Euro 6 models.

- Checks: cylinder balance, cylinder cut-out, compression test, and engine performance test.
- Diesel particulate filter regeneration.
- Ash and cinder content reset in the diesel particulate filter.
- Differential pressure sensor reset.



System Display of **VIS** and **VIS2** lighting system.



Modification of the AFI aftertreatment fuel injector adaptive factor in the EMS engine management system, both in models with V3 technology and V4 technology. This version, in models with V3 technology, this system also has the deletion of the inducement mode that deletes P207F and P103C errors.

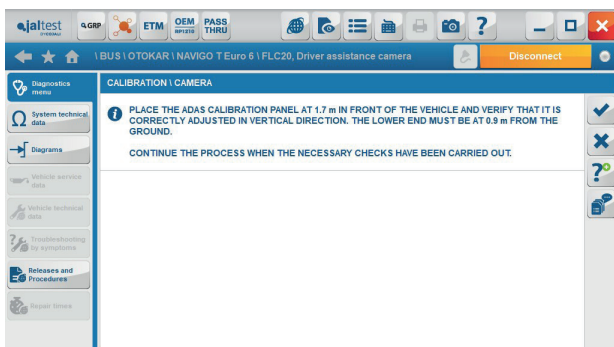
In vehicles with V3 technology, troubleshooting guides have been added to error codes from transmission system.

OTHER BRANDS AND MANUFACTURERS

ISUZU

- ⊕ New **Mimamori 17** system that includes advanced functions such as the vehicle configuration and operation data reset.
- ⊕ New **ADAS** system, emergency braking control and **AEBS/LDWS** lane departure control with actions such as copy/paste parameters and multifunction camera maintenance are available.

KNORR-BREMSE



- ⊕ New **ADAS** systems, **FLR21** radar and **FLC20** camera. Both systems, which are installed in numerous vehicles such as OTOKAR buses, FORD Cargo trucks, etc., include system calibrations.

MITSUBISHI-FUSO

- ⊕ Fuso Canter ECO Hybrid model with wiring diagrams.

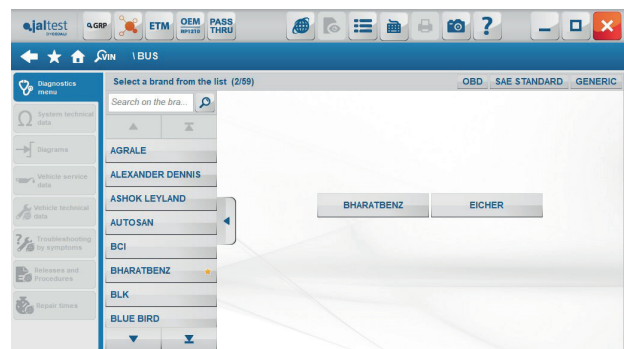
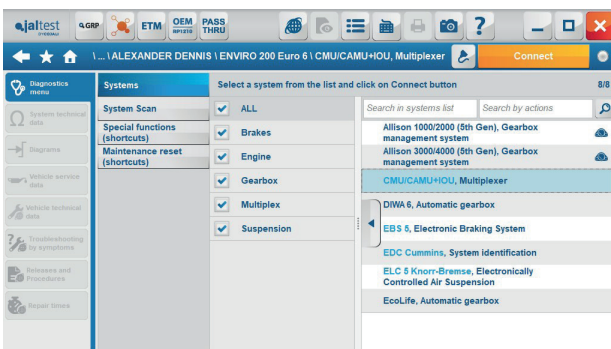
NICHE MARKETS

+ New Actia Multiplex **CMU/CAMU + IOU** system installed in Alexander Dennis buses.

In addition, new brands and models are included, and coverage of specific vehicles in India, Australia and other countries is expanded.

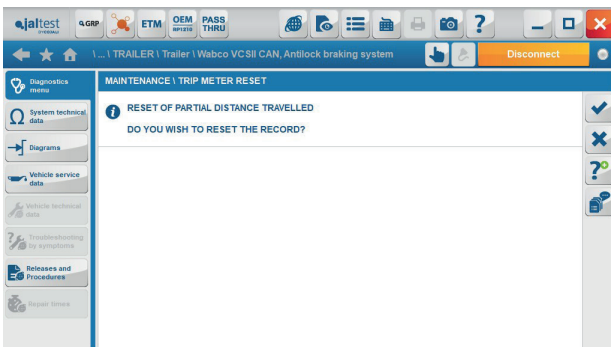
New brands such as **SML Isuzu** in truck, **Eicher** and **Bharatbenz** in buses are highlighted.

Regarding models, **Mahindra Blazo** or **Big Thumb** with GEI3 engine of UD Trucks among others are highlighted.



TRAILER

WABCO



ABS VCS II braking system, partial distance travelled reset.

BENDIX

+ New **TABS-6 ADV MC** system.



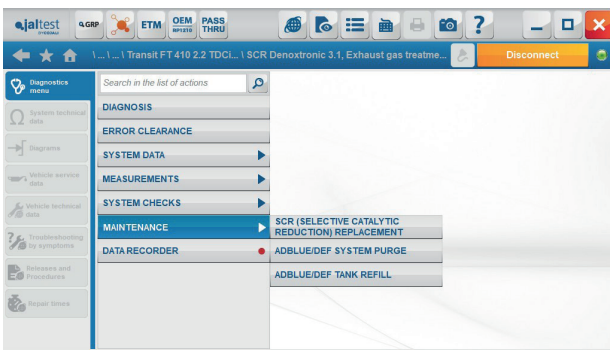
LIGHT VEHICLES

FIAT

In Fiat Ducato models with F1CE3481M engine, diesel particulate filter regeneration in the [EDC 17 CP52](#) system.

FORD

- + New system in Ford Transit FT 2.0 [2016 - ...] model, [TPMS](#) tire pressure control.



- + New system in Ford Transit FT 2.2 [2014-2019] model, [SCR Denoxtronic 3.1](#) exhaust gas treatment system that includes the system reset.

MERCEDES

- + New [Sprinter WDB907](#) model.

PSA Groupe

Diesel particulate filter regeneration in [CR/EDC Delphi 6.2](#) engine management system.

RENAULT

Function extension in the M9T Euro 5 [SID 309](#) engine management system such as components activation (cooling pump, EGR system, etc.) and components reset (fuel pump, diesel particulate filter regeneration, etc.).

VOLKSWAGEN

- + New system in Crafter and T6 models, [6AT](#) automatic transmission.